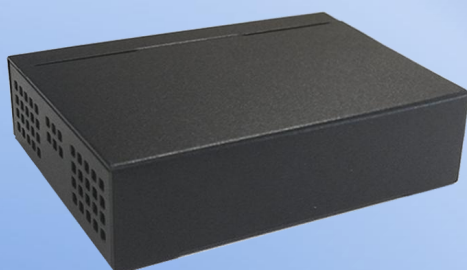


GP-1005-I

**5-port 100M Ethernet switch
Iron case, DC5V1A, LR:2KV**



CE FCC



Introduction

GP-1005-I is a super mini unmanaged fast Ethernet-Switch product specially designed for family, dormitory, small business and etc situations. It is to realize network interconnection and video surveillance. It provides 5*10/100M adaptive Ethernet ports which all supports full wire-speed blocking switch and MDI/MDI adaptive.



Characteristic

- Mini iron case, novel and fashionable.
- Support IEEE 802.3 & IEEE 802.3u
- Support 802.3x full-duplex
- Support semi-duplex backpressure mode
- 10/100M self-adaptive RJ45 ports
- Support MDI/MDI-X adaptive
- Support semi & full-duplex
- Support self-negotiation mode
- Adopt store-and-forward switching mode
- Support MAC address self-learning
- Dynamic LED indicators



Specifications

Model	GP-1005-I
Standard	IEEE 802.3, IEEE 802.3u, IEEE 802.3x
Fixed port	5 ports 10/100M adaptive RJ45 ports
Network cable type	10Base-T: Category 3/4/5 unshielded twisted pair Support maximum 100m transmission distance
	100Base-TX: Category 5 unshielded twisted pair Support maximum 100m transmission distance
	100Base-TX: Category 6 unshielded twisted pair Support maximum 100m transmission distance
LED indicator	Power (Power), port status (Link/Act) 1 to 5
Exchange capacity	1Gbps
MAC address table	1K
Forwarding rate	10Mbps: 14880PPS
	100Mbps: 148800PPS
Dimensions	100*62*25(mm)
Power Specifications	3.3VDC 1A
power consumption	< 3.3W
Operating temperature	0° C~40° C
Storage temperature	-40° C~70° C
Working humidity	10%~90% RH non-condensing
storage humidity	5%~90% RH non-condensing
Cooling method	Natural cooling
Equipment size	94*70*25mm
Packing List	Power Adapter
	1 Ethernet switch
	Quick Start (with certificate and warranty card)